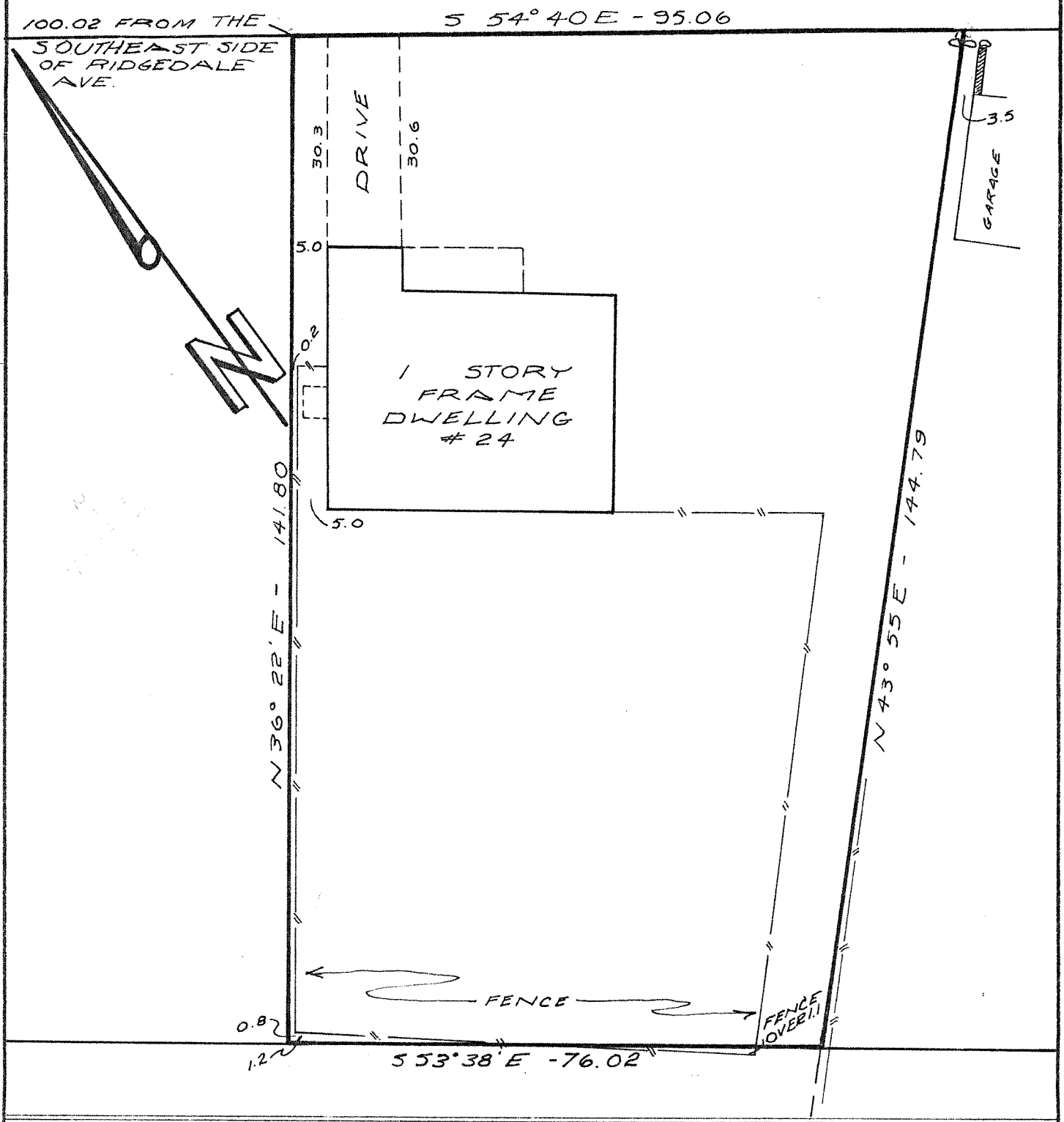


PEARL STREET



SURVEY AT
CITY OF SUMMIT, UNION COUNTY, N.J.

CERTIFIED TO THEODORE LI,
COMMONWEALTH LAND
TITLE INSURANCE COMPANY
SUMMIT AND ELIZABETH
TRUST COMPANY.

Aurnhammer
ssociates, Inc.
Engineers · Planners · Surveyors
Summit · Succasunna · Sparta N.J.

Scale: 1" = 20 FT.

Field Book	Order No.	Date as of:
501-130	4368	28 JUNE 1977

Keith W. Condit
KEITH W. CONDIT
L.S. No. 12808